

NPD1236

12.1" IP65 Sunlight Readable Marine Display

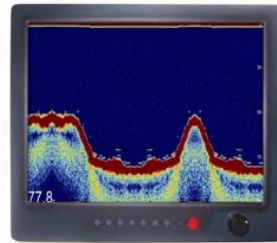
NAVPIXEL NPD1236, the high-performance, rugged touch monitor, is specially engineered to survive from the most demanding working environment. Housed in a milled billet aluminum case, the slim-profile NAVPIXEL NPD1236 is light weight and watertight. The front-mounted sunlight readable touch screen makes the industrial rugged monitor vividly and user-friendly. In addition, the high power efficiency and low heat design guarantee the stability and longevity required for mission critical deployment.

Features:

- 1000 nits Sunlight Readable LCD
- Long Life, Low Power Consumption LED Backlight
- Wide Operating Temperature
- Advanced Optical Bonding (AOT)
- High Shock & Vibration Resistance
- Resistive Touch Support
- IP65 Facial Waterproof
- 9-36V DC Input

Application:

- Marine



Specifications

V1

Model Number	NPD1236
Description	12.1" IP65 Sunlight Readable Marine Display
Backlight	LED Backlight
Active Display Area	245.76 x 184.32mm
Brightness	1000 cd/m ²
Resolution	1024x768(XGA)
Contrast Ratio	700:1
Pixel Pitch (mm)	0.24(H) x 0.24 (V)
Viewing Angle	140 (H), 140(V)
Display Color	262k
Response Time	23ms
Inputs	VGAx1, DVl1x1, Compositex3, RS232x1, USBx1
PIP Support	NA
Mechanical	
IP Rating	Facial waterproof to IP65 standards when console mounted.
Construction	Rugged Aluminum Alloy Chassis
Mounting	Panel (Flush) mount, VESA mount
Dimension (mm)	297.2(W)x256(H)x56(D)
Net Weight	2.5kg
Power	
Voltage	DC Input Voltage: DC 9~36V
Power Consumption	24W
Environmental	
Operating Temperature	-20°C~60°C
Non-Operating Temperature	-30°C~80°C
Certification	CE / FCC
Marine Type Approval	BV Rule IACES-E10 certification, comply with IEC 60945

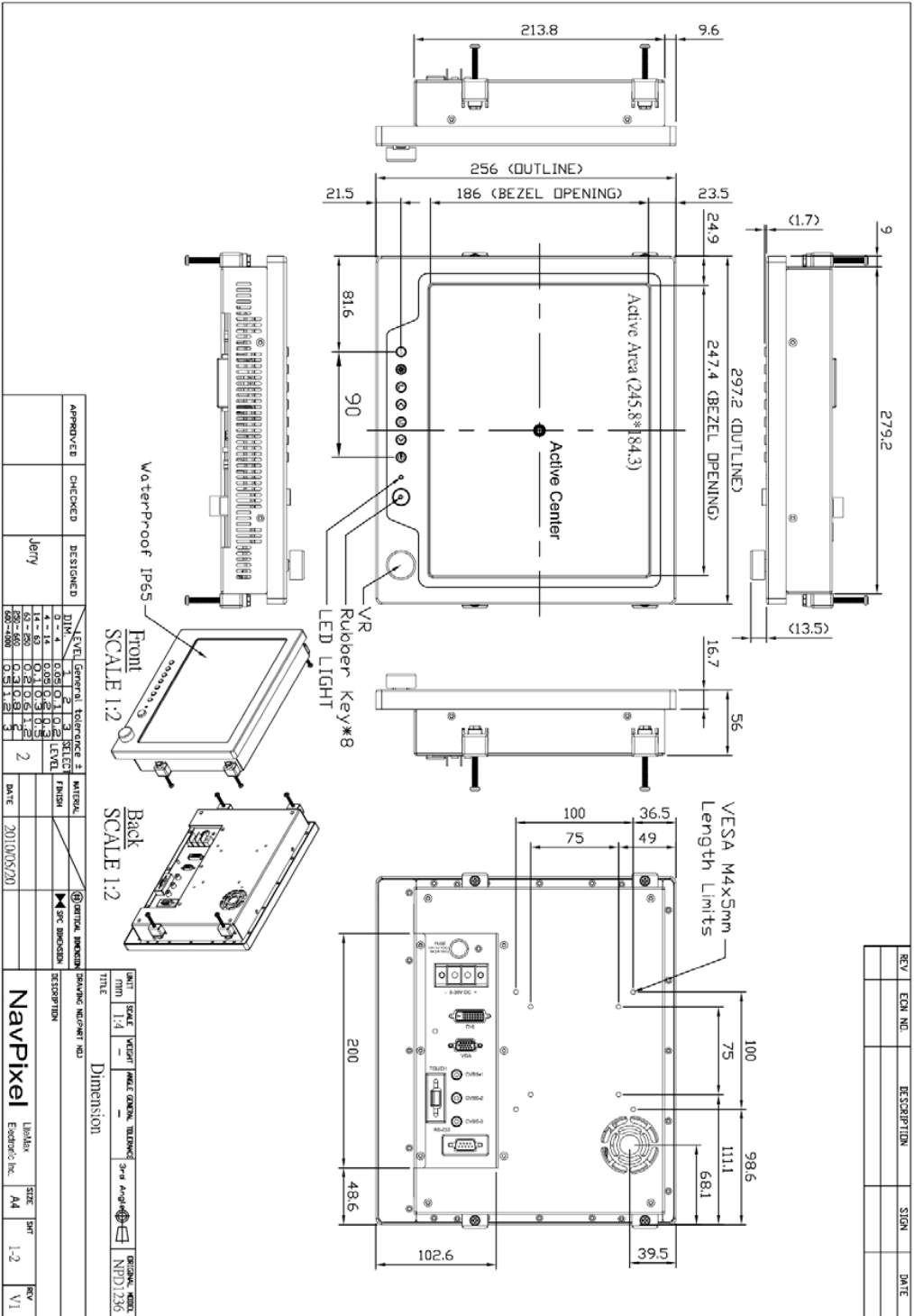
Specifications are subject to change without notice.

All brands or product names are trademarks or registered trademarks of their respective companies.

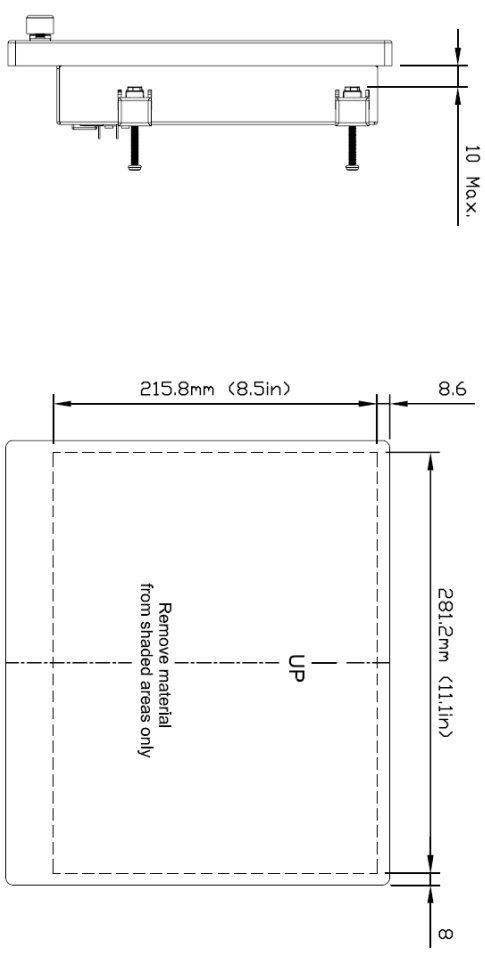
Mechanical Drawing

Outline Dimensions

Unit:mm



REV	EDN. NO.	DESCRIPTION	SIGN	DATE



Side View

Back View

APPROVED	CHECKED	DESIGNED	LEVEL	General tolerance ±	SELECT	MATERIAL	FINISH	DATE
		Jerry	DIN 4	0.1	2			2010/05/20
			4 - 14	0.05	1			
			14 - 53	0.1	2			
			53 - 250	0.2	3			
			250 - 500	0.3	4			
			500 - 1000	0.5	5			
			1000 - 2500	1.0	6			
			2500 - 5000	1.5	7			
			5000 - 10000	2.0	8			
			10000 - 25000	3.0	9			
			25000 - 50000	4.0	10			
			50000 - 100000	5.0	11			
			100000 - 250000	7.0	12			
			250000 - 500000	10.0	13			
			500000 - 1000000	15.0	14			
			1000000 - 2500000	20.0	15			
			2500000 - 5000000	30.0	16			
			5000000 - 10000000	40.0	17			
			10000000 - 25000000	60.0	18			
			25000000 - 50000000	80.0	19			
			50000000 - 100000000	100.0	20			
			100000000 - 250000000	150.0	21			
			250000000 - 500000000	200.0	22			
			500000000 - 1000000000	300.0	23			
			1000000000 - 2500000000	400.0	24			
			2500000000 - 5000000000	600.0	25			
			5000000000 - 10000000000	800.0	26			
			10000000000 - 25000000000	1000.0	27			
			25000000000 - 50000000000	1500.0	28			
			50000000000 - 100000000000	2000.0	29			
			100000000000 - 250000000000	3000.0	30			
			250000000000 - 500000000000	4000.0	31			
			500000000000 - 1000000000000	6000.0	32			
			1000000000000 - 2500000000000	8000.0	33			
			2500000000000 - 5000000000000	10000.0	34			
			5000000000000 - 10000000000000	15000.0	35			
			10000000000000 - 25000000000000	20000.0	36			
			25000000000000 - 50000000000000	30000.0	37			
			50000000000000 - 100000000000000	40000.0	38			
			100000000000000 - 250000000000000	60000.0	39			
			250000000000000 - 500000000000000	80000.0	40			
			500000000000000 - 1000000000000000	100000.0	41			
			1000000000000000 - 2500000000000000	150000.0	42			
			2500000000000000 - 5000000000000000	200000.0	43			
			5000000000000000 - 10000000000000000	300000.0	44			
			10000000000000000 - 25000000000000000	400000.0	45			
			25000000000000000 - 50000000000000000	600000.0	46			
			50000000000000000 - 100000000000000000	800000.0	47			
			100000000000000000 - 250000000000000000	1000000.0	48			
			250000000000000000 - 500000000000000000	1500000.0	49			
			500000000000000000 - 1000000000000000000	2000000.0	50			
			1000000000000000000 - 2500000000000000000	3000000.0	51			
			2500000000000000000 - 5000000000000000000	4000000.0	52			
			5000000000000000000 - 10000000000000000000	6000000.0	53			
			10000000000000000000 - 25000000000000000000	8000000.0	54			
			25000000000000000000 - 50000000000000000000	10000000.0	55			
			50000000000000000000 - 100000000000000000000	15000000.0	56			
			100000000000000000000 - 250000000000000000000	20000000.0	57			
			250000000000000000000 - 500000000000000000000	30000000.0	58			
			500000000000000000000 - 1000000000000000000000	40000000.0	59			
			1000000000000000000000 - 2500000000000000000000	60000000.0	60			
			2500000000000000000000 - 5000000000000000000000	80000000.0	61			
			5000000000000000000000 - 10000000000000000000000	100000000.0	62			
			10000000000000000000000 - 25000000000000000000000	150000000.0	63			
			25000000000000000000000 - 50000000000000000000000	200000000.0	64			
			50000000000000000000000 - 100000000000000000000000	300000000.0	65			
			100000000000000000000000 - 250000000000000000000000	400000000.0	66			
			250000000000000000000000 - 500000000000000000000000	600000000.0	67			
			500000000000000000000000 - 1000000000000000000000000	800000000.0	68			
			1000000000000000000000000 - 2500000000000000000000000	1000000000.0	69			
			2500000000000000000000000 - 5000000000000000000000000	1500000000.0	70			
			5000000000000000000000000 - 10000000000000000000000000	2000000000.0	71			
			10000000000000000000000000 - 25000000000000000000000000	3000000000.0	72			
			25000000000000000000000000 - 50000000000000000000000000	4000000000.0	73			
			50000000000000000000000000 - 100000000000000000000000000	6000000000.0	74			
			100000000000000000000000000 - 250000000000000000000000000	8000000000.0	75			
			250000000000000000000000000 - 500000000000000000000000000	10000000000.0	76			
			500000000000000000000000000 - 1000000000000000000000000000	15000000000.0	77			
			1000000000000000000000000000 - 2500000000000000000000000000	20000000000.0	78			
			2500000000000000000000000000 - 5000000000000000000000000000	30000000000.0	79			
			5000000000000000000000000000 - 10000000000000000000000000000	40000000000.0	80			
			10000000000000000000000000000 - 25000000000000000000000000000	60000000000.0	81			
			25000000000000000000000000000 - 50000000000000000000000000000	80000000000.0	82			
			50000000000000000000000000000 - 100000000000000000000000000000	100000000000.0	83			
			100000000000000000000000000000 - 250000000000000000000000000000	150000000000.0	84			
			250000000000000000000000000000 - 500000000000000000000000000000	200000000000.0	85			
			500000000000000000000000000000 - 1000000000000000000000000000000	300000000000.0	86			
			1000000000000000000000000000000 - 2500000000000000000000000000000	400000000000.0	87			
			2500000000000000000000000000000 - 5000000000000000000000000000000	600000000000.0	88			
			5000000000000000000000000000000 - 10000000000000000000000000000000	800000000000.0	89			
			10000000000000000000000000000000 - 25000000000000000000000000000000	1000000000000.0	90			
			25000000000000000000000000000000 - 50000000000000000000000000000000	1500000000000.0	91			
			50000000000000000000000000000000 - 100000000000000000000000000000000	2000000000000.0	92			
			100000000000000000000000000000000 - 250000000000000000000000000000000	3000000000000.0	93			
			250000000000000000000000000000000 - 500000000000000000000000000000000	4000000000000.0	94			
			500000000000000000000000000000000 - 1000000000000000000000000000000000	6000000000000.0	95			
			1000000000000000000000000000000000 - 2500000000000000000000000000000000	8000000000000.0	96			
			2500000000000000000000000000000000 - 5000000000000000000000000000000000	10000000000000.0	97			
			5000000000000000000000000000000000 - 10000000000000000000000000000000000	15000000000000.0	98			
			10000000000000000000000000000000000 - 25000000000000000000000000000000000	20000000000000.0	99			
			25000000000000000000000000000000000 - 50000000000000000000000000000000000	30000000000000.0	100			

UNIT	SCALE	WEIGHT	ANGLE	GENERAL TOLERANCE	3
------	-------	--------	-------	-------------------	---

Ordering Information

Part Number	Description
NPD1236-EGAW-G01	12",1000nits,XGA,AR glass.LID12B02,AD2662,WP,AOT,V01
NPD1236-EGAW-G011	12",1000nits,XGA,AR glass.LID12B02,AD2662,WP,AOT.with adaptor,V01
NPD1236-ETAW-G01	12", 1000nits, XGA,Touch-usb.Transparency:80%,LID12B02.AD2662,WP,AOT,V01
NPD1236-ETAW-G011	12",1000nits,XGA,Touch-usb.(Transparency:80%)LID12B02.AD2662,WP,AOT,with adaptor.V01

Optional Accessories

Part Number	Description
980000300010	SET,OTHER,CD for User. Menu & Touch driver(NPD series)
810650005110	CABLE,POWER,DC,5000mm,TER.MINAL TO OPEN,14AWG*2C+BRA.ID,COOL GRAY 7C PVC JACKET,P
810130001000	CABLE.VGA.3000mm.D-SUB15P MALE.BLUE TO D-SUB 15P MALE BLUE.BLACK.P
321189155501	Print,Menu,User,NPD.1555,V0,series,P
321179123601	Print,Menu,Install,NPD,1236.V0,Flush mount template,P
112615315401 x (4)	Metal,SPCC,NPS,1531,Lock,V0,P
214032121101 x (4)	Screw,M4,32mm,Round,Ni,P
460100002101 x (4)	Fixture,other,MP-4,V0,P
980000560010 (Optional)	SET,OTHER,ADAPTER REWORK.60W KPA-060F WITH Y TYPE.TERMINAL,P
810618301010 (Optional)	CABLE.POWER.AC.1830mm USA type
810618301090 (Optional)	CABLE,POWER,AC,1830mm Europe type
810618301050 (Optional)	CABLE.POWER.AC.1830mm UK type
810618301170 (Optional)	CABLE.POWER,AC,1830mm Australia type
810618301030 (Optional)	CABLE.POWER.AC.1830mm Japan type